

ACCURACY – WHY CLOSE IS NOT GOOD ENOUGH

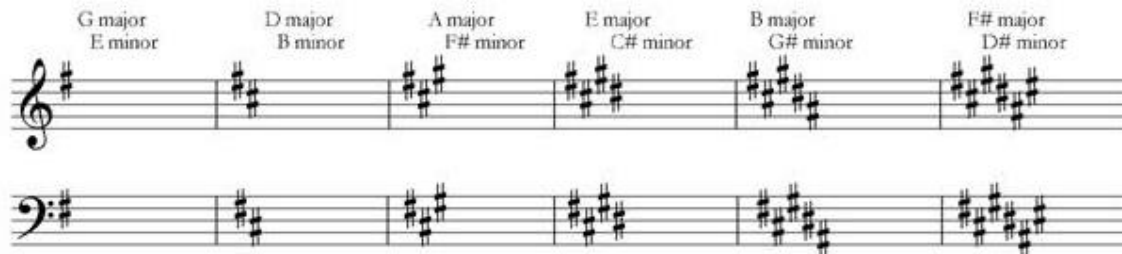
WHY IS SINGING ACCURATELY IMPORTANT?

When we sing accurately, chords tune better and have the opportunity to ring. There are many things that affect tuning, one of which is singing accurate, tuned intervals. When we sing in tune, our audiences enjoy our singing much more. And so do WE!

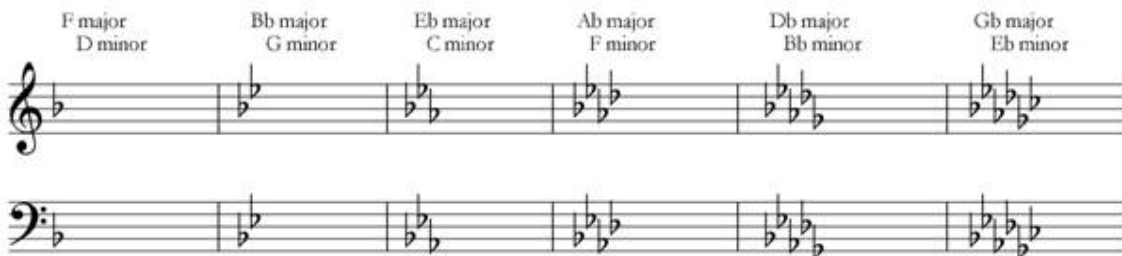
BASIC ONLINE MUSIC THEORY COURSE – BY A SWEET ADELINE, NO LESS!

<http://www.rozmusictheory.com/signup.html>

Key Signatures with Sharps



Key Signatures with Flats



TAKE A PITCH!

- Establishes the key
- May help you get off to a better start
- NO penalty or judgment about taking a pitch
- Top quartets and choruses take a pitch
- You get to adjust your ears to the stage

DEVELOP YOUR EAR

Learn intervals and scale steps. The site below allows you to choose songs that are familiar to you to build an Interval Song Chart that works for you.

<http://www.earmaster.com/products/free-tools/interval-song-chart-generator.html>

MARK YOUR MUSIC:

- Identify the key
- Highlight the tonal center (DO)
- Identify “home/pillar” chords
- Find octaves
- Leads: highlight P-notes (scale steps 2-3-6-7)
- Find the rubs (Major 2nd interval)
- Identify lead/bari position in the vocal line

TONAL CENTER EXERCISE:

- Sing in unison on the tonal center
 - Match vowels, agree on interp plan
- Each part takes turns singing their part against the tonal center.
 - Two sing the tonal center, one sings their part, one listens
 - Listener watches the singer’s music (which has been marked!)

SING DUETS:

L/BS L/BR L/T BS/BR BS/ T BR/T

- Listen for:
 - Octaves
 - Seconds
 - Contrary motion
 - Vowel match
 - DO
 - Part balance
 - Embellishments